



## RESUME

### Super Agent Jon Le Bon! vol. 8 BIG BEAVER FOREVER

A terrible explosion has left the Agency in ruins. When Jon Le Bon comes to, he rushes to find Henry, who will help him regain control of the Agency and, if they are lucky, find the survivors of the disaster. Together they unravel the plan orchestrated by Big Beaver and Q. The mission won't be a walk in the park, because an old character is back: Ultra Jon, and he too is determined to rule the world!

**SUPER AGENT JON LE BON! VOL. 8**  
**BIG BEAVER FOREVER**  
ADVENTURE PRESS • 128 PAGES

***SUPER AGENT JON LE BON!*** is one of the most successful youth graphic novel series in recent years. Author Alex A.'s original style has tremendous appeal among young readers.

*Super Agent Jon Le Bon!* introduces students to a madcap world, one that is offbeat yet familiar. It features plenty of references to popular spy series, cartoons and video games. And then there's Jon, the lovable hero...not your average modern superhero.

#### **YOUTH GRAPHIC NOVEL SERIES *SUPER AGENT JON LE BON!***

**AUTHOR AND ILLUSTRATOR:** Alex A.

**TYPE OF ACTIVITY:** Discussion guide for the eighth volume in the *Super Agent Jon Le Bon!* series. This guide includes activities to do in class and questions to test understanding and promote discussion.

**LEVEL:** Elementary cycles 2 and 3 (grades 3 and 4, and grades 5 and 6)

**CROSS-CURRICULAR COMPETENCY:** Using creative thinking

**SUBJECT:** English

**COMPETENCY 1:** Reading and understanding a range of texts

**COMPETENCY 2:** Oral communication

**COMPETENCY 3:** Exercising critical judgment

**COMPETENCY 4:** Appreciating literary works

#### **SUPER AGENT JON LE BON: THE ANIMATED MINISERIES!**

For more fun and discussion, listen to a 90-seconds episode.



**cbckids.ca**



adventurepress.ca

## Lead a brief discussion with students using the following questions:

### 1. At the beginning of the story, Jon demonstrates his talent for solving math problems.

- What math puzzle does Jon have to solve to help Henry?
- How does Jon save him?
- What are some things that prove that Henry is an inventor?

### 2. Q, Henry's evil brain, is back with a vengeance in this volume.

- What is his nickname? How does he manage to get away from Henry?
- What role does he play in executing Big Beaver's plan?
- We find out he is obsessed with something. What is his obsession, and why has he developed it?

### 3. Despite the tragedy, Jon and Henry find Billy safe and sound.

- As soon as Billy regains consciousness, he learns an important, tragic fact. What is it?
- What shows that Billy is brave in the face of Big Beaver's robot threat?
- Have you ever been in a situation in which you had to be brave? Explain.

### 4. Like Billy, Mr. Shorthand is safe, but he develops an obsession after the tragedy.

- Why does Mr. Shorthand memorize all of the Agency's files?
- What information is in file 14, section B, lines 3 and 58, section 3-F?
- Do you think it is clever of Mr. Shorthand to memorize the files? Why? Would you do the same in his place?

### 5. To control the Agency, Big Beaver has developed an incredible plan.

- What demonstrates Big Beaver's extreme mental and physical abilities?
- When Big Beaver's plan is explained, we find out about the origin of two characters. Which ones?
- Big Beaver reveals some interesting information about plots from previous volumes. What is this information?
- Have you ever been in a situation in which you had to come up with a plan to organize something?



## Make your choice!

In this finale of the first major Super Agent Jon Le Bon story, there are plenty of developments, each one more gripping than the last. Ask students to choose scenes that struck them the most, identifying:

- the scene that surprised them the most
- the scene that made them laugh the most
- the scene that scared them the most
- the scene they liked the best
- the scene they disliked the most



NAME:

DATE:

At the beginning of the story, Jon dreams he meets an influential person who gives him an important message. Who is that person and what is the message?

---

---

---

In this volume, the Agency has to deal with a number of threats, whether characters or events. **Name four.**

1. 3.

2. 4.

An old character returns to rule the world. **Who is it and how does the character come back?** How does Henry manage to temporarily neutralize the threat?

---

---

---

What does EVA have to do to help Billy regain control of the central computer?  
**How does this affect EVA?**

---

---

---

How does Martha survive the explosion in her office?

---

---

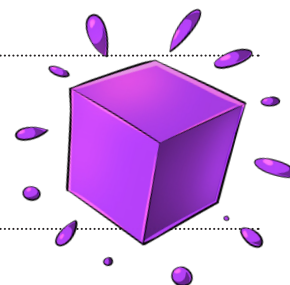
---

What idea do Henry and Q come up with to find Big Beaver's robots?  
**How do they eliminate the robots and then Ultra Jon?**

---

---

---



NAME:

DATE:

Which character, thought to be gone, comes to Jon and the team's rescue against Big Beaver's power?

List five unexpected developments that show that there was a **major change in circumstances in the story**.

1.

2.

3.

4.

5.

## Discussion

After reading the final volume in the first major Super Agent Jon Le Bon story, **what do you think of the dark ending?**

If you were the author, what would you have done or changed in this volume?

What do you think are the strengths and weaknesses of this series?



NAME:

DATE:

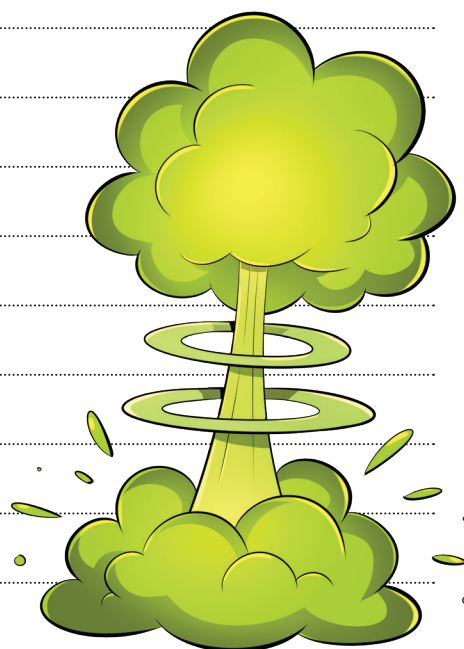
## Jon: a secret agent?

Jon is upset since finding out he was created by Big Beaver in a lab and that all of his achievements have been planned. **Jon doesn't believe he was ever a good agent.**

Do you think Jon is still a good agent? How can Jon come back from this?

**Explain your answer.**

**Imagine a way Jon could defeat Big Beaver once and for all.**



NAME:

DATE:

## Who is Big Beaver?

Big Beaver is clearly an important character in this volume. Describe him.

### PHYSICAL AND PSYCHOLOGICAL CHARACTER PORTRAIT

#### Primary character traits

What is Big Beaver like physically and psychologically?



#### Secondary character traits

List some of Big Beaver's gestures, comical expressions, actions, behaviours or statements.



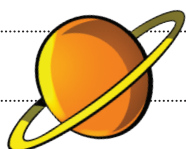
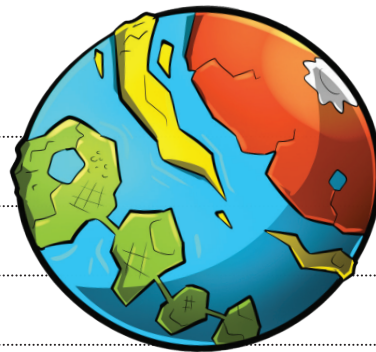
NAME:

DATE:

## What is it like now that Big Beaver rules the world?

Imagine what life on Earth is like now that Big Beaver has taken control of the Agency.

- How does Big Beaver rule the world? Does he rule alone or with a team? Does he still have his robots, or is he using another form of technology to control the world?
- What has become of Building A and the Agency's ancestral building since they fell into his hands?
- What is the impact of his control of life on Earth?
- What has become of Jon and the members of his team?





NAME: .....

DATE: .....

## Recreate a page from a comic book

Recreate dialogue using the empty speech balloons.

